

OKLAHOMA DEPARTMENT OF TRANSPORTATION					
FED. ROAD DIST. NO.	STATE	PROJ. NO.	FISCAL YEAR	SHEET NO.	TOTAL SHEETS
	OKLA.				
DESCRIPTION			REVISIONS		DATE

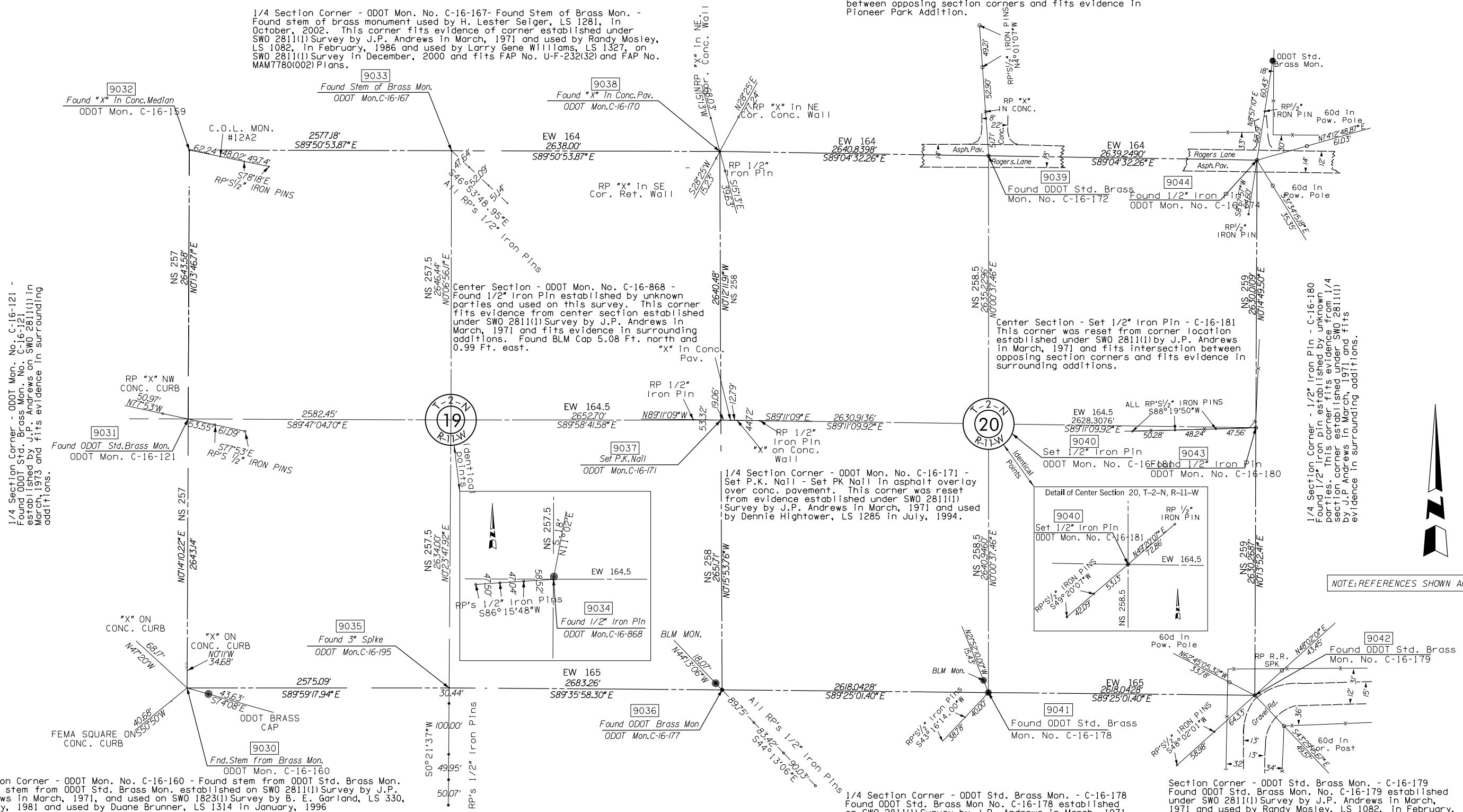
Section Corner - ODOT Mon. No. C-16-159 - Found "X" in Conc. Median Found "X" in Conc. Median - This Corner was re-established after construction of Rogers Lane by unknown parties but fits evidence from SWO 2811(1) Survey as established by J.P. Andrews in March, 1973 and was used by Randy Mosley, L.S. 1082, February, 1986 and used by Larry Gene Williams, L.S. 1327, on SWO 2811(1), December, 2000 and fits evidence in the surrounding additions and fits FAP No. MAM7780(002) Plans.

Section Corner - ODOT Mon. No. C-16-170 - Found "X" in Conc. Pav. Found "X" in Conc. Paving established by unknown parties. This corner fits evidence of section corner established under SWO 2811(1) Survey by J.P. Andrews in March, 1971 and used by Phillip Stevenson, LS 1159, in January, 1987 and fits FAP No. U-F-232(32) and FAP No. MAM7780(002) Plans.

Section Corner - 1/2" Iron Pin - C-16-174 Found 1/2" Iron Pin established by unknown parties. This corner fits evidence from section corner established under SWO 2811(1) Survey by J.P. Andrews in March, 1971 and used by Phillip Stevenson, LS 1159, in May, 1988 and fits evidence in surrounding additions.

1/4 Section Corner - ODOT Mon. No. C-16-167 - Found Stem of Brass Mon. - Found stem of brass monument used by H. Lester Seiger, LS 1281, in October, 2002. This corner fits evidence of corner established under SWO 2811(1) Survey by J.P. Andrews in March, 1971 and used by Randy Mosley, LS 1082, in February, 1986 and used by Larry Gene Williams, LS 1327, on SWO 2811(1) Survey in December, 2000 and fits FAP No. U-F-232(32) and FAP No. MAM7780(002) Plans.

1/4 Section Corner - ODOT Std. Brass Mon. - C-16-172 Found ODOT Std. Brass Mon. No. C-16-172 established under SWO 2811(1) Survey by J.P. Andrews in March, 1971. This corner fits close to on line and 1/2 distance between opposing section corners and fits evidence in Pioneer Park Addition.



Section Corner - ODOT Mon. No. C-16-160 - Found stem from ODOT Std. Brass Mon. Found stem from ODOT Std. Brass Mon. established on SWO 2811(1) Survey by J.P. Andrews in March, 1971, and used on SWO 1823(1) Survey by B. E. Garland, LS 330, in May, 1981 and used by Duane Brunner, LS 1314 in January, 1996

1/4 Section Corner - ODOT Mon. No. C-16-195 - Found 3" Spike Found 3" Spike with City of Lawton Washer set by Duane Brunner, LS 1314, January, 1996 and fits evidence from SWO 2811(1) Survey as established by J.P. Andrews in March, 1971 and used on SWO 1823(1) Survey by B.E. Garland, LS 330, in May, 1981 and fits 1/4 corner on FAP No. U-F-232(32) Plans.

Section Corner - ODOT Mon. No. C-16-177 - Found ODOT Brass Mon. - Found ODOT Std. Brass Mon. No. C-16-177 established under SWO 2811(1) Survey by J.P. Andrews in March, 1971 and fits section corner on FAP No. U-F-232(32) Plans. Found BLM Alum. Cap 12.95 Ft. North and 12.60 Ft. West.

1/4 Section Corner - ODOT Std. Brass Mon. - C-16-178 Found ODOT Std. Brass Mon. No. C-16-178 established on SWO 2811(1) Survey by J.P. Andrews in March, 1971. This corner fits close to on line and 1/2 distance between opposing section corners.

Section Corner - ODOT Std. Brass Mon. - C-16-179 Found ODOT Std. Brass Mon. No. C-16-179 established under SWO 2811(1) Survey by J.P. Andrews in March, 1971 and used by Randy Mosley, LS 1082, in February, 1987 and fits surrounding evidence.

OKLAHOMA DEPARTMENT OF TRANSPORTATION SURVEY DIVISION			
SURVEY DATA SHEET			
PLS	DRD		
DRAWN	DRD		
CHECKED			
APPROVED			
CREW	LAWTON	SWO 4488 (1)	PROJECT NO. 27050(04) SHEET NO. S-27